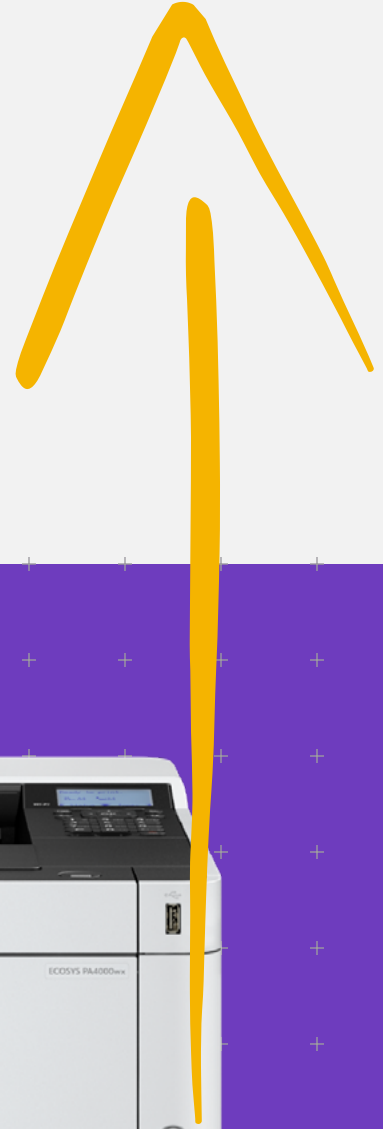




# Don't wait. Modernize your office.

The ECOSYS PA4000wx is your dependable workmate, with a fast warm-up time of 15 seconds or less, compatibility with diverse mobile printing software, and sustainable long-life parts.



- ECOSYS PA4000wx**
- A4 B&W printer**
- Up to 42 pages per minute**
- Double-sided printing**
- High processor speed**



## ECOSYS PA4000wx

### BASIC SPECIFICATIONS

**Configuration:** B&W Printer - Print  
**Pages per Minute:** Letter: 42 ppm; Legal: 34 ppm; A4: 40 ppm  
**Duplex Print Speed:** Letter 21 ppm; Legal 17 ppm; A4 20 ppm  
**Display:** 5 line LCD with Hard Key Control Panel  
**Warm Up Time:** 15 Seconds or Less (Power On)  
**First Page Out Time:** Print: 6.4 Seconds or Less  
**Resolution:** 300dpi, 600dpi, up to Fine1200  
**Memory:** 512MB  
**Duplex:** Standard Stackless Duplex Supports Statement to Legal (5.5" x 8.5" - 8.5" x 14"), 16 lb. Bond - 90 lb. Index (60 - 163gsm)  
**Dimensions / Weight:** 15.2" W x 15.5" D x 10.7" H / 32 lbs  
**Monthly Print Volume:** 80,000 Pages per Month

### POWER CONSUMPTION

**Electrical Requirements:** 120V, 60Hz, 8.2A; 220-240V, 50/60Hz, 4.1A  
**Typical Electricity Consumption (TEC):**  
120V: 0.34 kWh/week; 220-240V 0.34 kWh/week  
**Maximum (including Options):** 120V: 1,114 W; 220-240V: 1,085 W  
**Printing:** 120V: 559.6 W; 220-240V: 555.9 W  
**Ready Mode:** 120V: 10.4W; 220-240V: 6.0W  
**Sleep Mode:** 120V: 0.4W; 220-240V: 0.3 W  
**Power Off:** 120V: 0.1 W; 220-240V: 0.1 W

### PRINTER SPECIFICATIONS

**Standard Controller:** ARM Cortex A53 single 1.0GHz + ARM Cortex-M3 100MHz  
**PDLs / Emulations:** PRESCRIBE, PCL6 (PCL-XL / PCL-5e), KPDL3 (PostScript3 compatible), PDF w/KPDL3 setting, XPS / Open XPS  
**Fonts:** Outline: 93 Fonts (PCL 6/KPDL3), 4 Calibri, 4 Cambria, Bitmap: 1 Font, 79 Outline Fonts  
**Barcodes:** 1 Dimensional: 45 Type; 2 Dimensional: PDF417 1 Type

**Windows OS Compatibility:** Windows 10 (32/64), Windows 11 (64), Windows Server 2016, 2019, 2022  
**MAC OS Compatibility:** MAC OS X 10.9 or Greater  
**Linux Printer Driver:** Ubuntu 20.04 or higher, Debian 11 or higher, OpenSUSE 15.5 or higher, Fedora 39 or higher, CentOS Stream 9 or higher  
**Chrome OS:** Version 118 or Higher  
**Interfaces:** 10 BASE-T/100 BASE-T/1000 BASE-T, USB 2.0, 1 USB Host  
**Mobile Printing:** Apple AirPrint®, Mopria®, KYOCERA Mobile Print, KYOCERA MyPanel, KYOCERA Android Print Service Plugin  
**Network Print and Supported Protocols:** TCP/IP V4/V6, NetBEUI, FTPS, LPR, Port9100, IPPS, WSD, SMTP, SNMP, Syslog/SIEM  
**Drivers:** KX Driver, PCL Uni Driver, KPDL Uni Driver, MAC Driver, Linux Driver, ChromeOS Driver  
**Utilities:** KYOCERA Print Center, KYOCERA Cloud Access, KYOCERA Net Direct Print, KYOCERA Net Viewer, KYOCERA Device Manager, KYOCERA Quick Network Setup, KYOCERA Fleet Services  
**\*SDHC or SD required for:** Private Print, Quick Copy Box, Job Box, Proof & Hold, and Job Storage

### SECURITY

**Standard:** Local & Network Authentication, IPsec, HTTPS, SNMPv3, IPPS, POP over TLS, LDAP

### PAPER SUPPLY

**Standard / Maximum Paper Capacity:** 350 Sheets / 850 Sheets  
**Standard / Maximum Paper Sources:** 2 / 4 Including Multipurpose Tray  
**Paper Output Capacity:** 250 Sheets  
**Paper Size:** Standard and MPT: Statement to Legal (5.5" x 8.5" - 8.5" x 14"), Custom  
**Paper Weight:** Drawer 16 lb. Bond - 90 lb. Index (60 - 163gsm); MPT: 16 lb. Bond - 120 lb. Index (60 - 220gsm)  
**Input Materials:** Plain Paper, Bond Paper, Recycled Paper, Thin Paper, Thick Paper; MPT: Labels, OHP, Envelopes

### ADDITIONAL OPTIONS

**Print Management:** ThinPrint (UG-33)  
**Security:** Card Authentication Kit (B)  
**SDHC or SD Card:** 16 / 32 GB  
**UG-50:** TPM (Trusted Platform Module)

### NOTE:

\*SDHC or SD required for: Private Print, Quick Copy Box, Job Box, Proof & Hold, and Job Storage

Specifications and design are subject to change without notice. For the latest on connectivity visit [kyoceradocumentsolutions.us](http://kyoceradocumentsolutions.us). ECOSYS, PRESCRIBE, Kyocera Net Manager, Kyocera Net Viewer, Kyocera Device Manager, PDF Direct Print, Command Center RX, and KX Driver are trademarks of The Kyocera Companies. Mac OS and AirPrint are trademarks of Apple, Inc. Mopria is a trademark of Mopria Alliance, Inc. Windows is a trademark of Microsoft, Inc. All other trademarks are the property of their respective owners.



Kyocera Document Solutions Partner

KYOCERA Document Solutions America  
225 Sand Road, PO Box 40008  
Fairfield, New Jersey 07004-0008, USA  
Tel: 973-808-8444



[kyoceradocumentsolutions.us](http://kyoceradocumentsolutions.us)

Kyocera Document Solutions does not warrant that any specifications mentioned will be error-free. Specifications are subject to change without notice. Information is correct at time of going to press. All other brand and product names may be registered trademarks or trademarks of their respective holders and are hereby acknowledged.  
©2024 KYOCERA Document Solutions America, Inc.