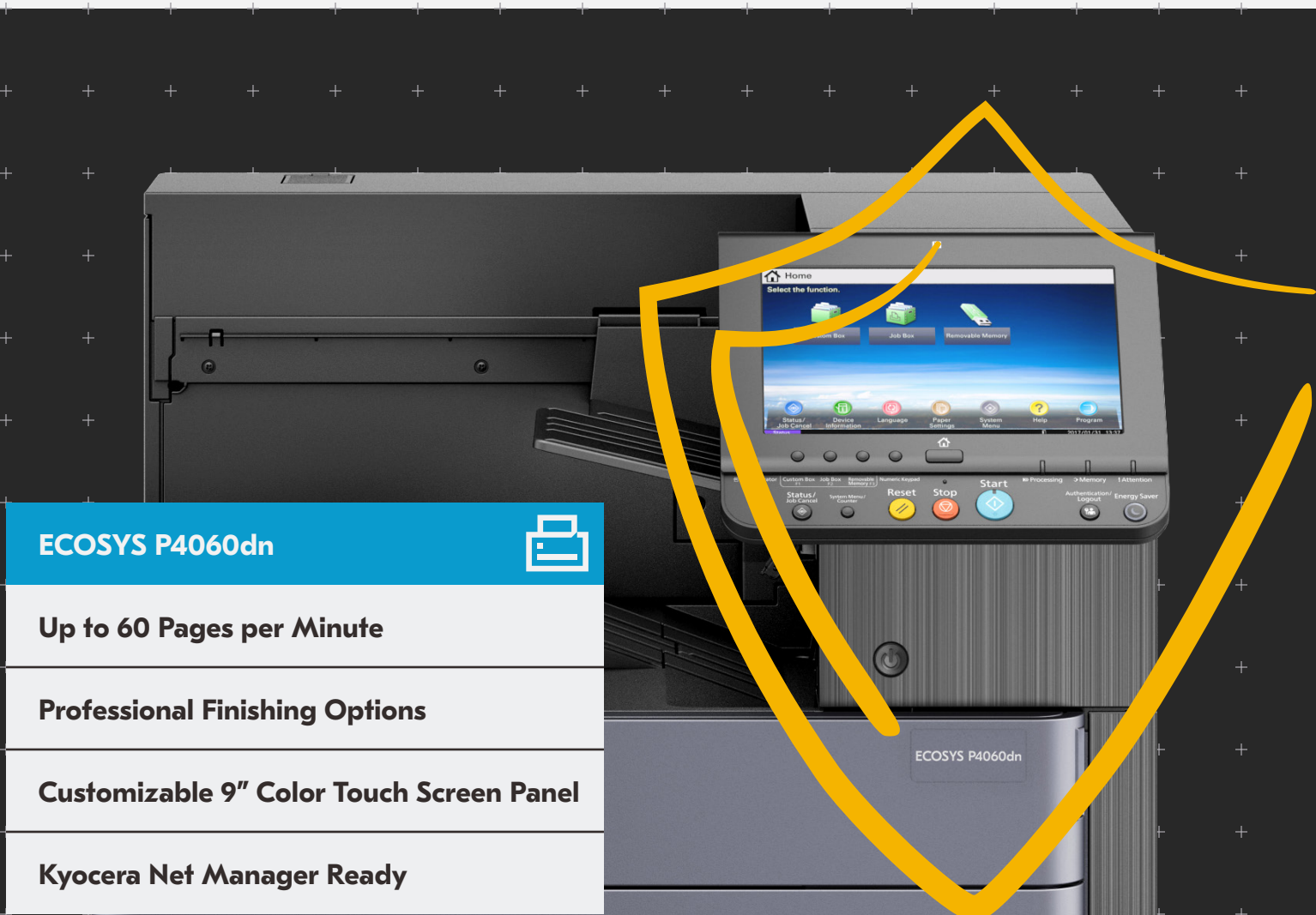



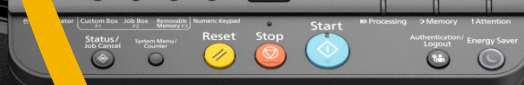


High Performance Printing Simple & Secure

Kyocera's ECOSYS P4060dn provides a way to print more efficiently than ever before. With a range of professional finishing options combined with Kyocera's traditional reliability, you can print your documents with peace of mind. The very latest in security technology means that risks are minimized, keeping your data safe and your processes secure.



ECOSYS P4060dn 
Up to 60 Pages per Minute
Professional Finishing Options
Customizable 9" Color Touch Screen Panel
Kyocera Net Manager Ready



ECOSYS P4060dn

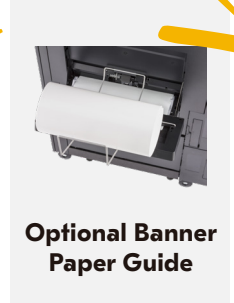
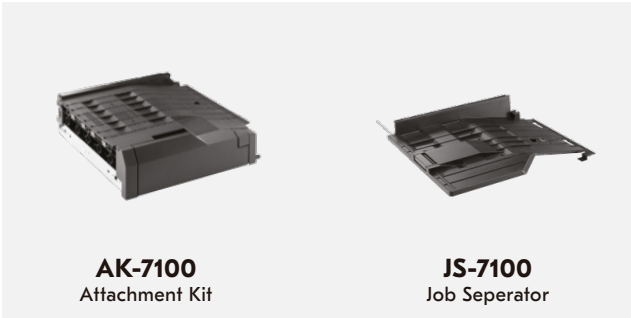
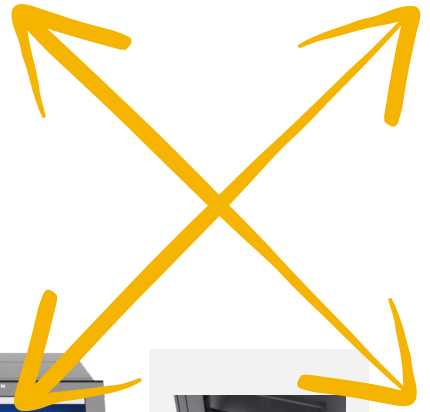
Product Comparison



Models	ECOSYS P4060dn	FS-9530dn
Letter Speed	60 ppm	51 ppm
Standard Configuration	Network Print	Network Print
First Time	3.8 Seconds or Less	3.5 Seconds or Less
Warm Up Time	17 Seconds or Less (Power On)	60 Seconds or Less (Power On)
Control Panel	9" Color Touch Screen	2 Line LCD
Customizable Home Screen	Standard	Not Available
Dimensions (W x D x H) / Weight	23.7" x 26.2" x 31.1" /170.2 lbs	23.6"W x 25.4"D x 24.2"H / 150 lbs
Interface	10/100/1000BaseTX, Wireless & Wi-Fi Direct, Hi-Speed USB 2.0, 4 USB Host 4 Interfaces, 2 Expansion Slots	10/100 BaseTX, Hi-Speed USB 2.0, Bi-Directional Parallel IEEE1284
Optional Interface	10/100/1000BaseTX (IB-5D 1u al NIC), IEEE 802.11 b/g/n (IB-51: Wireless LAN Interface)	USB Host, IB-23 Network Interface
Standard Controller	QoriQ T1042 (Dual Core) / 1.2 GHz	PowerPC750FL /600 MHz
Print Resolution	1200 x 1200 dpi	600 x 600 dpi
Standard / Maximum RAM	4 GB / 4 GB, 8 GB (SSD)	120 MB / 640 MB
Standard Hard Disk Drive	320 GB HDD	40 GB HDD
Standard / Maximum Paper Capacity	1,150 Sheets / 7,150 Sheets	1,200 Sheets/ 4,200 Sheets
External Finishing Capacity	1,000 Sheets / 4,000 Sheets	500 Sheets / 500 Sheets
Finishing Capability	3 Position Staple, Hole Punch, Booklet Folding	3 Position Staple, Hole Punch, Booklet Folding
Duplex	Standard	Standard
Wi-Fi Direct Support	Standard	Not Available
NFC Support	Standard	Not Available
USB Host Function	Print	Print
USB Host Supported File Types	TIFF, PDF, Encrypted PDF, OpenXPS, XPS	TIFF, JPEG, PDF, XPS
Toner Yield*	32K	40K
Toner Locking System	Standard	Not Available
Maximum Monthly Volume	300,000 Pages per Month	300,000 Pages per Month
Drum Type / Yield	a-Si / 600,000 Pages	a-Si / 500,000 Pages
Preventative Maintenance Interval	600,000 Pages	500,000 Pages

*Accordance with ISO 19798

The ECOSYS P4060dn Options



Stapler Option

SH-10 for DF-7120 / BF-730
SH-12 for DF-7110

Hole Punch Option

PH-7A for DF-7120 / DF-7110

ECOSYS P4060dn

BASIC SPECIFICATIONS

Configuration: Black & White A3 Printer
Pages Per Minute: Letter: 60 ppm, Legal: 36 ppm, Ledger: 30 ppm, 12" x 18": 30 ppm (print only)
Warm Up Time: 17 Seconds or Less (Power On)
First Page Out:
Print: 3.8 Seconds or Less
Display: 9" Color Touch Screen Control Panel
Resolution / Bit Depth: 600 x 600 dpi; 9600 dpi x 600 dpi; 1200 x 1200 dpi
Memory / Hard Disk Drive: 4GB RAM / 8GB SSD / 320GB HDD Standard
Duplex: Standard Stackless Duplex Supports Statement to 12" x 18", 14 lb Bond – 166 lb Index (52 – 300gsm)
Standard Output Tray: Statement – 12" x 18" / 500 sheets; up to 12" x 48" Banner (Single Sheet)
Electrical Requirements: 120V, 60Hz, 12A; 220-240V, 50Hz, 7.2A
Typical Electricity Consumption (TEC): 120V: 0.89 kWh/week; 220V: 0.90 kWh/week
Dimensions: 23.70" W x 26.18" D x 31.10" H
Weight: 170.2 lbs
Maximum Monthly Duty Cycle: 300,000 Pages per Month

PAPER SUPPLY

Standard Paper Sources: Dual 500 Sheet Trays, 150 Sheet MPT, Auto Selection/Switching
Optional Paper Sources: Dual 500 Sheet Trays (PF-7100), Dual 1,500 Sheet Trays (PF-7110); Side LCT: 3,000 Sheet Capacity Tray (PF-7120)
Output Tray: Standard 500 Sheets
Paper Capacity: Standard 1,150 Sheets; Maximum 7,150 Sheets
Paper Size:
Tray 1 – 5.5" x 8.5" – 8.5" x 14" (Statement to Legal); Tray 2 – 5.5" x 8.5" – 12" x 18", Custom Size; **PF-7100:** 5.5" x 8.5" – 12" x 18"; **PF-7110; MPT:** 5.5" x 8.5" – 12" x 18" (Multiple Sheets); Up to 12" x 48" Banner (Single Sheet)
Paper Weight: Trays / MPT: 14 lb Bond – 166 lb Index (52 – 300gsm)
Input Materials: Standard/Optional Drawer: Plain Paper, Bond Paper, Recycled Paper, Envelopes; MPT: Plain Paper, Bond Paper, Recycled Paper, Cardstock, Transparencies, Labels, Envelopes

SECURITY SPECIFICATIONS

Standard: Local Authentication, Network Authentication (IPsec, HTTPS, LDAP over SSL, SNMPv3); Secure Print (IPP over SSL)

Optional: Data Security Kit (E): HDD Overwrite Mode, HDD Data Encryption

PRINT SPECIFICATION

Standard Controller: Freescale QorIQ T1024 (Dual Core) / 1.2GHz
PDLs / Emulations: PRESCRIBE, PCL6 (PCL-XL / PCL5), KPDL3 (PS3), XPS, OPEN XPS; Optional (UG-34): IBM ProPrinter, Line Printer, LQ-850
Print Resolution: Up to 1200 x 1200 dpi
File Formats: TIFF, PDF, Encrypted PDF, OpenXPS, XPS
Fonts/barcodes: 93 outline fonts (PCL), 136 fonts (KPDL 3), 8 fonts (Windows Vista), 1 Bitmap font, 45 types of one-dimensional barcodes, 1 type of two-dimensional barcode (PDF417)
OS Compatibility: Windows 2012 Server x64/Windows 8.1 x86/Windows 8.1 x64/Windows 10 x86/Windows 10 x64/Windows 2012 R2 Server x64/Windows 2016 Server x64/Windows 2019 Server x64/Mac OS: 10.X or Later
Mobile Printing: Apple AirPrint®, Google Cloud Print™, Kyocera Mobile Print, Mopria, NFC.
Interfaces: Standard: 10/100/1000BaseTX, Wireless & Wi-Fi Direct, Hi-Speed USB 2.0, 4 USB Host Interfaces, 2 Expansion Slots
Optional: 10/100/1000BaseTX (**IB-50** for Dual NIC), IEEE 802.11 b/g/n (**IB-51** for Wireless LAN Interface)
Network Print and Supported Protocols: TCP/IP, NetBEUI, IPv4, IPv6, IPsec, HTTP, LPD, FTP, IPP, RawPort, LLTD, SNMP, DHCP, SMTP, POP3, DNS, SNMPv1/v2.
Drivers: KX Driver, PCL Mini Driver, KPDL Mini Driver, PPD for MAC, PPD for Linux.
Utilities: Kyocera Net Manager, Kyocera Net Viewer, PDF Direct Print, Command Center RX.

Output & Finishing Options

OPTIONAL 1,000 SHEET FINISHER DF-7120²

Stack / Staple Capacity: Main Tray: 1,000 Sheets / 50 Sheets (up to 24 lb Bond [90gsm])
Paper Size: 5.5" x 8.5" – 12" x 18"
Paper Weight: 14 lb Bond – 166 lb Index (52 – 300gsm)
Edge Staple Position: 3 Positions: Top Left, Bottom Left, Center Bind
Optional Punch: PH-7A 2 and 3 Hole Punch Unit, Supports 5.5" x 8.5" – 12" x 18"; 14 lb Bond – 166 lb Index (52 – 300gsm)³
Dimensions: 21.57" W x 24.35" D x 41.34" H

OPTIONAL 4,000 SHEET FINISHER DF-7110²

Stack / Staple Capacity: Main Tray (A): 4,000 Sheets;

Sub Tray (B): 200 Sheets / 65 Sheets (up to 24 lb Bond [90gsm])
Paper Size: 5.5" x 8.5" – 12" x 18"
Paper Weight: 14 lb Bond – 166 lb Index (52 – 300gsm)
Edge Staple Position: 3 Positions: Top Left, Bottom Left, Center Bind
Optional Punch: PH-7A 2 and 3 Hole Punch Unit, Supports 5.5" x 8.5" – 12" x 18"; 14 lb Bond – 166 lb Index (52 – 300gsm)³
Dimensions: 23.91" W x 26.32" D x 41.78" H
Optional Booklet Folder / Tri-fold Unit: BF-730 Booklet Folder supports 8.5" x 11", 8.5" x 14", 11" x 17"; Fold booklet staple: 16 lb – 24 lb Bond (60 – 90gsm) 16 sheets; 25 lb – 28 lb Bond (91 – 105gsm) 13 sheets; Fold booklet no staple: 16 lb – 24 lb Bond (60 – 90gsm) 5 sheets; 25 lb Bond – 72 lb Index (91 – 120gsm) 3 sheets; 32 lb Bond – 110 lb Cover (121 – 256gsm) 1 sheet; Trifold supports 8.5" x 11" only: 16 lb – 24 lb Bond (60 – 90gsm) 5 sheets; 25 lb Bond – 72 lb Index (91 – 120gsm) 3 sheets; 16 lb – 28 lb Bond (60 – 105gsm) 1 sheet
Optional Multi-Bin Mailbox: MT-730(B) includes 7 Trays; Supports 16 lb Bond – 90 lb Index (60 – 163gsm); Stack Capacity per bin: 100 Sheets: 5.5" x 8.5", 8.5" x 11"; 50 Sheets: 8.5" x 14", 11" x 17"

ADDITIONAL OPTIONS

Bridge Unit Attachment Kit (**AK-7100**), Banner Guide 10, Card Authentication Kit (B), Gigabit NIC (**IB-50**), Wireless LAN IEEE802.11b/g/n (**IB-51**), ThinPrint (UG-33), Emulation (**UG-34**), Data Security Kit (E), Numeric Keypad **NK-7110(B)**, Job Separator (JS-7100)

¹ Bridge unit AK-7100 is required for the use of DF-7110/DF-7120.

² Only 1 Output Option can be installed

³ Requires DF-7110

Specifications and design are subject to change without notice. For the latest on connectivity visit usa.kyoceradocumentsolutions.com. TASKalfa, PRESCRIBE, Kyocera Net Manager, Kyocera Net Viewer, Kyocera Device Manager, PDF Direct Print, Command Center RX, and KX Driver are trademarks of The Kyocera Companies. Mac OS and AirPrint are trademarks of Apple, Inc. Google Cloud Print is a trademark of Google, Inc. Mopria is a trademark of Mopria Alliance, Inc. Windows is a trademark of Microsoft, Inc. All other trademarks are the property of their respective owners.



Kyocera Document Solutions Partner

KYOCERA Document Solutions America
225 Sand Road, PO Box 40008
Fairfield, New Jersey 07004-0008, USA
Tel: 973-808-8444



usa.kyoceradocumentsolutions.com

Kyocera Document Solutions does not warrant that any specifications mentioned will be error-free. Specifications are subject to change without notice. Information is correct at time of going to press. All other brand and product names may be registered trademarks or trademarks of their respective holders and are hereby acknowledged.
©2020 KYOCERA Document Solutions America, Inc.