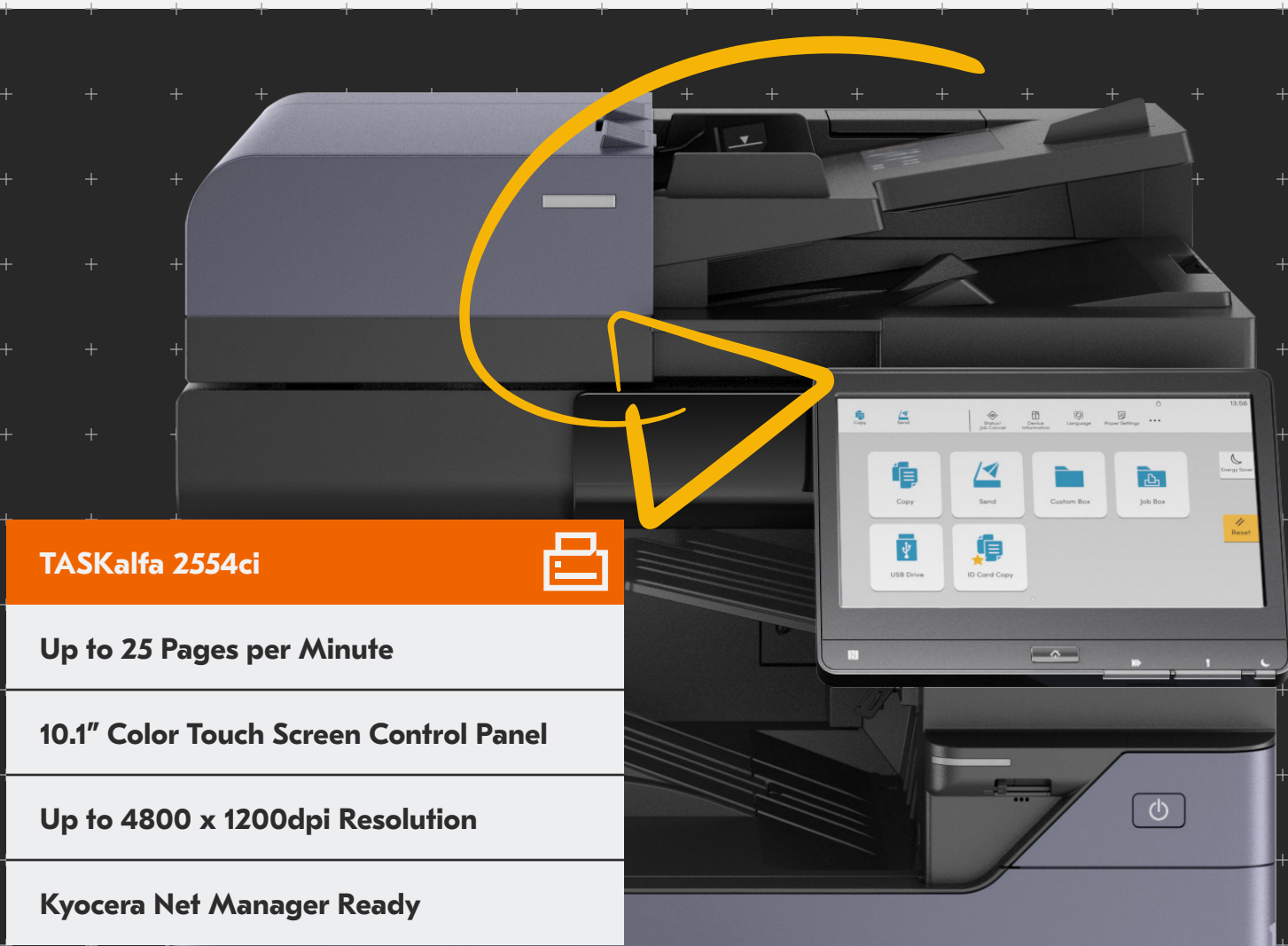




# The Latest Evolution in Workplace Printing

The Kyocera Evolution Series combines reliable and secure technology with the latest innovation to provide your workplace with a flexible multifunctional printer ready for the challenges of the modern world. Protect your data and count on a device you can rely on for high-quality printing, copying and scanning whenever you need it.



<b>TASKalfa 2554ci</b> 
<b>Up to 25 Pages per Minute</b>
<b>10.1" Color Touch Screen Control Panel</b>
<b>Up to 4800 x 1200dpi Resolution</b>
<b>Kyocera Net Manager Ready</b>



## TASKalfa 2554ci

### BASIC SPECIFICATIONS

**Configuration:** Color Multifunctional System - Print/Scan/Copy/Optional Fax

**Speed:** Letter: 25 ppm, Legal: 15 ppm, Ledger: 12 ppm, 12" x 18": 12 ppm (print only)

**Warm Up Time:** 18 seconds or less (power on)

#### First Page Out:

Copy: 6.4 seconds or less Black, 8.5 seconds or less Color  
Print: 7.0 seconds or less Black, 9.2 seconds or less Color

**Display:** 10.1" Color Touch Screen Control Panel

**Memory/Hard Disk Drive:** 4GB RAM/32GB SSD/320GB HDD Standard, 1TB HDD (option)

**Duplex:** Standard Stackless Duplex supports Statement (5.5" x 8.5") to Ledger (12" x 18"), 16 lb. Bond - 142 lb. Index (60 - 256gsm)

**Standard Output Tray:** Statement - 12" x 18"/500 Sheets; up to 12" x 48" Banner (single sheet)

**Electrical Requirements:** 120V, 60Hz, 12A; 220-240V, 50/60Hz, 7.2A

**Typical Electricity Consumption (TEC):** 120V: .29 kWh/week; 220V: .31 kWh/week

**Dimensions:** 23.7" W x 26.1" D x 31.1" H

**Weight:** 198.4 lbs

**Maximum Monthly Duty Cycle:** 100,000 Pages per Month

### PAPER SUPPLY

**Standard Paper Sources:** Dual 500 Sheet Trays, 150 Sheet MPT, Auto Selection/Switching

**Optional Paper Sources:** Dual 500 Sheet Trays (PF-7140)  
Dual 1,500 Sheet Trays (PF-7150) 3,000 Sheet Capacity Tray (PF-7120)

**Paper Capacity:** Standard 1,150 Sheets; Maximum 7,150 Sheets

#### Paper Size:

Tray 1 - 5.5" x 8.5" - 8.5" x 14" (statement to legal); Tray 2 - 5.5" x 8.5" - 12" x 18", Custom Size; PF-7140: 5.5" x 8.5" - 12" x 18" PF-7150/PF-7120: 8.5" x 11" MPT: 5.5" x 8.5" - 12" x 18" (multiple sheets); Up to 12" x 48" Banner (single sheet)

#### Paper Weight:

Trays/MPT: 14 lb. Bond - 166 lb. Index (52 - 300gsm)

#### Input Materials:

Standard/Optional Trays: Plain, Bond, Recycled, Preprinted, Vellum, Color, Pre-Punched, Thick, Thin, High Quality, Letterhead, Envelope, Custom; MPT: Plain, Bond, Recycled, Preprinted, Vellum, Color, Pre-Punched, Thick, Thin, High Quality, Transparency (OHP), Coated, Index Tab, Label, Letterhead, Envelope, Custom

### SECURITY SPECIFICATIONS

Local Authentication, Network Authentication, Encryption Communication (IPsec, HTTPS, LDAPs, SMTP/POP/FTPS over TLS 1.3, SNMPv3), TPM chipset (Trusted Platform Module), S/MIME, SCEP (auto certificate issuance/renewal), OCSP/CRL (certificate validation), Secure Boot (firmware authenticity verification), Run Time Integrity Check, Data Security Kit 10 enhances IPsec communication (support for FIPS140-2), HDD and Memory Overwrite (7x) Mode and HDD Data Encryption (256 bit), Common Criteria (ISO/IEC-15408/EAL2), IEEE 2600.2

### PRINT SPECIFICATION

**Standard Controller:** ARM Cortex-A53/1.6GHz

**PDLs/Emulations:** PRESCRIBE, PCL6 (PCL-XL/PCL-5c), KPDL3 (PS3), XPS, OPEN XPS, PDF; Optional (UG 34): IBM ProPrinter, Line Printer, LQ-850

**Print Resolution:** Up to 4800 x 1200 dpi

**Fonts:** KPDL3, PCL6, Bitmap

**OS Compatibility:** Windows: 8.1/10/Server 2012/Server 2012 R2/Server 2016/Server 2019; Mac OS X v10.0 or later; Chrome OS

**Mobile Printing:** Apple AirPrint®, Mopria®, KYOCERA Mobile Print, KYOCERA MyPanel

**Interfaces:** Standard: 1000 Base-T/100-Base-Tx/10BASE-T (IPv6, IPv4, IPsec), 802.3az ready, High-Speed USB 3.0, 4 USB 2.0 Host Interfaces, 2 Expansion Slots, IEEE 802.11b/g/n Wireless LAN (communication distance 98.5 feet); Optional: IEEE 802.11a/b/g/n/ac (**IB-37** for 2.4/5GHz), 10/100/1000BaseTX (**IB-50** for Dual NIC); IEEE 802.11b/g/n (**IB-51** for Wireless LAN Interface (communication distance 328.1 feet))

**Network Print and Supported Protocols:** HTTPS, FTPS, SNMP v1/v2c/v3, Raw Port (Port 9100) TCP/IP, IPv4, IPv6, DHCP LPR, DNS, WSD Scan/Print.

**Drivers:** KX Driver, PCL Mini Driver, KPDL Mini Driver, KX Driver for XPS, Network Fax Driver, TWAIN Driver, WIA Driver, Status Monitor, Common Profile, Output to PDF, Security Watermark, Color Optimizer, MAC Driver, Chrome Print Driver, Linux Driver, KX Driver with Distributed Printing, Windows Inbox Driver, SANE Driver.

**Utilities:** KYOCERA Net Viewer, KYOCERA Device Manager, Quick Setup, KX PRESCRIBE Macro Generator, ID Register, Software Management Service, Upgrade Studio, Web Package Builder/Maker, Removal Tool, Wi-Fi Setup Tool, PDF Direct Print, Command Center RX; Kyocera Net Manager (option)

### SCAN SPECIFICATION

**Scan Type:** Color and Black & White Scanner

**Scan Resolution:** 600 dpi, 400 dpi, 300 dpi, 200 dpi, 200 x 100 dpi, 200 x 400 dpi

**File Formats:** TIFF, JPEG, XPS, OpenXPS, PDF/A-2.0 (MMR/JPB Compression/High Compression PDF); Option: Scan Extension Kit Text Searchable PDF; MS Office File

**Connectivity/Supported Protocols:** 10 BASE-T/100 BASE-TX/1000 BASE-T (IPv6, IPv4, IPsec) TCP/IP, Hi-Speed USB 3.0

**Scanning Functions:** Scan-to-Folder (SMBv3), Scan-to-Email, Scan-to-FTPS, Scan-to-FTPS over TLS 1.3, Scan-to-USB, WSD Scan, DSM/SANE Scan, TWAIN Scan, Specified Color Removal, Border Erase, Preview

**Original Size:** Document Processor: 5.5" x 8.5" - 11" x 17"; Glass: Up to 11" x 17"

**Drivers:** TWAIN/WIA/DSM-SANE Driver/WSD Scan

### OPTIONAL DOCUMENT PROCESSORS<sup>2</sup>

**Acceptable Originals:** 5.5" x 8.5" - 11" x 17"

**DP-7140:** Reversing Automatic Document Processor/50 Sheets  
Speed: Simplex: 50 ipm (BW/Color); Duplex: 16 ipm (BW/Color)  
Weight: Simplex: 13 lb. Bond - 90 lb. Index (45 - 160gsm); Duplex: 16 lb. - 32 lb. Bond (50 - 120gsm)

**DP-7150:** Reversing Automatic Document Processor/140 Sheets  
Speed: Simplex: 80 ipm (BW/Color); Duplex: 48 ipm (BW/Color)  
Weight: Simplex: 13 lb. Bond - 90 lb. Index (35 - 160gsm); Duplex: 16 lb. - 32 lb. Bond (50 - 120gsm)

**DP-7160:** Dual Scan Document Processor/320 Sheets  
Speed: Simplex: 100 ipm (BW/Color); Duplex: 200 ipm (BW/Color)  
Weights: Simplex: 13 lb. Bond - 120 lb. Index (35 - 220gsm); Duplex: 16 lb. - 120 lb. Index (50 - 220gsm)

### DP-7170 (with multi-feed and staple detection):

Dual Scan Document Processor/320 Sheets  
Speed: Simplex: 100 ipm (BW/Color); Duplex: 200 ipm (BW/Color)  
Weights: Simplex: 13 lb. Bond - 120 lb. Index (35 - 220gsm); Duplex: 16 lb. - 120 lb. Index (50 - 220gsm)

### COPY SPECIFICATIONS

**Copy Resolution:** 600 x 600 dpi

**Image Mode:** Text, Photo, Text/Photo, Graphic/Map

**Continuous Copy:** 1 - 9,999

**Additional Features:** Auto Magnification, Auto Paper Select, Combine Copy, Mirror Image, Rotate Copy, Border Erase, Split Copy, Margin Shift, Page Number, Form Overlay, Blank Page Skip, Specified Color Removal, Proof Copy, Preview, ID Card Copy, Handwriting Emphasis, Super Resolution

**Job Management:** 1,000 User Codes, Job Build, Super Resolution, Shortcut Keys, Repeat Copy

**Magnification/Zoom:** Full Size, 4 Reduction, 4 Enlargement  
Preset Ratios, 25 - 400% in 1% Step Increments

**Document Box:** Custom Box, Job Box, USB Drive Box, Fax Box (with optional Fax System)

### OPTIONAL FAX SPECIFICATIONS

**Fax Type:** Fax System 12 (option)

**Type/Data Compression:** G3 Fax/MMR, MR, MH, JBIG

**Transmission Speed/Modem Speed:** Less than 3 seconds/  
33.6 Kbps

**Fax Memory:** Standard 170 MB

**Driver:** Network Fax Driver

**Fax Functions:** Network Fax, Duplex Transmission and Reception, Encrypted Transmission and Reception, Polling Transmission and Reception, Broadcast, Fax Server Integration, Fax Dedicated Paper Feed Tray, Fax Forwarding to email or file

### SOLUTIONS AND SERVICES

#### Remote Management

Kyocera Fleet Services ready! A highly secure cloud-based monitoring solution that offers real-time visibility into your fleet. Optimize device uptime and be notified when to replenish supplies. Streamline billing with seamless 3<sup>rd</sup> party application integration, allowing you to focus solely on your business.

#### Printing Software

Cost Control & Security, Cloud & Mobile, Printer Management

#### Content Services

Scan & Connect, Intelligent Process Automation, Enterprise Content Management

#### IT Solutions

Technology Solutions, Including solutions for Cloud and Data Centers; Network Infrastructure, Cybersecurity Solutions, Collaboration Solutions

#### Consulting Services

Including IT Health Check, CIO as a Service, Healthcare Compliance, Backup and Recovery Planning

#### Professional Services

Including Design and Architecture, Project Implementation, Project Management

#### Managed Services

Including Help Desk Services, Retainer Services and On-site Support

**Output & Finishing Options<sub>3</sub>**

**OPTIONAL 250 SHEET INNER SHIFT TRAY JS-7110**

**Stack Capacity:** 250 Sheets

**Paper Size:** 8.5" x 11" – 11" x 17"

**Paper Weight:** 14 lb. Bond – 166 lb. Index (52 – 300gsm)

**OPTIONAL 500 SHEET INTERNAL FINISHER DF-7100<sub>4</sub>**

**Stack/Staple Capacity:** 500 Sheets/50 Sheets

**Paper Size:** 5.5" x 8.5" – 12" x 18"

**Paper Weight:** 14 lb. Bond – 166 lb. Index (52 – 300gsm)

**Edge Staple Position:** 3 Positions: Front 1 Staple, Edge 1 Staple, Face 2 Staples

**Optional Punch:** PH-7100 2/3 Hole Punch Unit, Supports 5.5" x 8.5" – 12" x 18"; 14 lb. Bond – 166 lb. Index (52 – 300gsm)

**Dimensions:** 19.4" W x 21" D x 6.9" H

**OPTIONAL 1,000 SHEET FINISHER DF-7120<sub>4</sub>**

**Stack/Staple Capacity:** Main Tray: 1,000 Sheets/50 Sheets (up to 24 lb. Bond [90gsm])

**Paper Size:** 5.5" x 8.5" – 12" x 18"

**Paper Weight:** 14 lb. Bond – 166 lb. Index (52 – 300gsm)

**Edge Staple Position:** 3 Positions: Top Left, Bottom Left, Center Bind

**Optional Punch:** PH-7A 2/3 Hole Punch Unit, Supports 5.5" x 8.5" – 12" x 18"; 14 lb. Bond – 166 lb. Index (52 – 300gsm)

**Dimensions:** 21.6" W x 24.4" D x 41.3" H

**OPTIONAL 4,000 SHEET FINISHER DF-7140<sub>4</sub>**

**Stack/Staple Capacity:** Main Tray (A): 4,000 Sheets; Sub Tray (B): 200 Sheets/65 Sheets (up to 24 lb. Bond [90gsm])

**Paper Size:** 5.5" x 8.5" – 12" x 18"

**Paper Weight:** 14 lb. Bond – 166 lb. Index (52 – 300gsm)

**Edge Staple Position:** 3 Positions: Top Left, Bottom Left, Center Bind

**Optional Punch:** PH-7A 2/3 Hole Punch Unit, Supports 5.5" x 8.5" – 12" x 18"; 14 lb. Bond – 166 lb. Index (52 – 300gsm)

**Dimensions:** 29" W x 26" D x 42" H

**Optional Booklet Folder/Tri-fold Unit BF-730: (DF-7140)**

Booklet Folder supports 8.5" x 11", 8.5" x 14", 11" x 17"; Fold Booklet Staple: 16 lb. – 24 lb. Bond (60 – 90gsm) 20 sheets; 25 lb. – 28 lb. Bond (91 – 105gsm) 13 sheets; Higher than 28 lb. Bond (Higher than 105 gsm) 1 sheet; Fold booklet no staple: 16 lb. – 24 lb. Bond (60 – 90gsm) 5 sheets; 25 lb. Bond – 72 lb. Index (91 – 120gsm) 3 sheets; 32 lb. Bond – 110 lb. Cover (121 – 256gsm) 1 sheet; Trifold supports 8.5" x 11" only: 16 lb. – 24 lb. Bond (60 – 90gsm) 5 sheets; 25 lb. Bond – 72 lb. Index (91 – 120gsm) 3 sheets; 16lb. – 28 lb. Bond (60 – 105gsm) 1 sheet

**Optional Multi-Bin Mailbox MT-730(B): (DF-7140) 7 Trays;** Supports: 16 lb. Bond – 90 lb. Index (60 – 163gsm); Stack Capacity per bin: 100 Sheets: 5.5" x 8.5", 8.5" x 11"; 50 Sheets: 8.5" x 14", 11" x 17"

**ADDITIONAL OPTIONS**

AK-7110 Bridge Unit Attachment Kit, JS-7100 Job Separator, HD-16 Large Capacity HDD (1TB), Banner Guide 10, Internet Fax Kit (A), Card Authentication Kit (B), Dual NIC (IB-50), Extended Range Wireless LAN NIC (IB-51), Thin Print option (UG-33), Printer Emulation option (UG-34), DT-730(B) Document Tray, Scan Extension Kit (A) for Text Searchable PDF; MS Office File, Keyboard Holder 10, Numeric Keypad (NK-7130), Cabinet Stand

- <sup>1</sup> Requires PF-7140
- <sup>2</sup> Only 1 Document Processor can be installed
- <sup>3</sup> Only 1 Output Option can be installed
- <sup>4</sup> Requires Bridge Unit Attachment Kit (AK-7110)

Specifications and design are subject to change without notice. For the latest on connectivity visit [kyoceradocumentsolutions.us](http://kyoceradocumentsolutions.us). TASKalfa, PRESCRIBE, Kyocera Net Manager, Kyocera Net Viewer, Kyocera Device Manager, PDF Direct Print, Command Center RX, and KX Driver are trademarks of The Kyocera Companies. Mac OS and AirPrint are trademarks of Apple, Inc. Windows is a trademark of Microsoft, Inc. All other trademarks are the property of their respective owners.



[www.xpobusiness.com](http://www.xpobusiness.com)

Kyocera Document Solutions Partner

KYOCERA Document Solutions America  
225 Sand Road, PO Box 40008  
Fairfield, New Jersey 07004-0008, USA  
Tel: 973-808-8444

